

# 8TH AVENUE INDUSTRIAL CENTER

2500 West 8th Avenue  
Denver, CO 80204

**Desirable location**  
on 8th Avenue, minutes  
from Downtown Denver

**Strong national and  
regional** tenancy within center

**Excellent visibility**  
from 8th Avenue and I-25!

**FLEX SPACE | 100% LEASED**

**CONTACT AGENT  
FOR INFORMATION**

## PROPERTY HIGHLIGHTS



**RENOVATED  
2019**



**DOORS  
DRIVE-IN**



**ZONING  
I-A**



### TRAFFIC COUNTS

I-25 @ WEST 8TH AVENUE  
(NORTH BOUND)  
**258,240** (2018, MPSI)

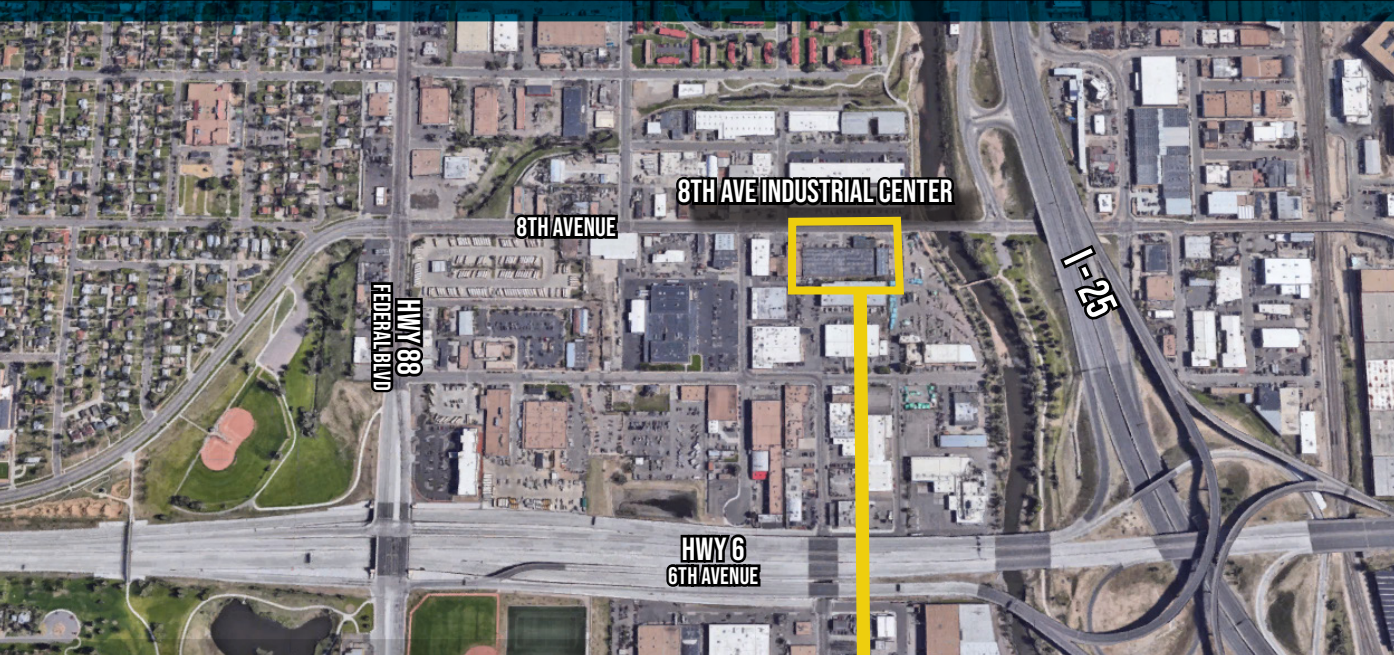


1805 S. Bellaire St., #400  
Denver, CO 80222  
303-333-7500  
[www.matrixgroupinc.com](http://www.matrixgroupinc.com)

**LAUREN QUIRAM**  
**DIRECTOR OF LEASING**  
[lquiram@matrixgroupinc.com](mailto:lquiram@matrixgroupinc.com)  
**303-300-5271**

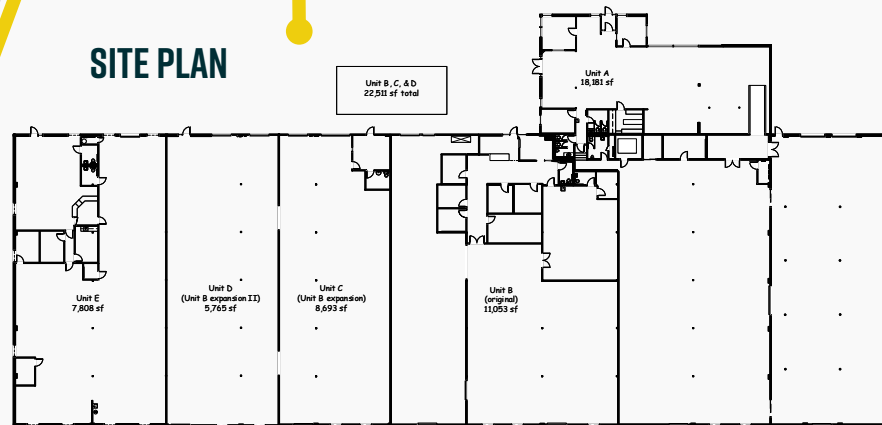
The information contained herein has been obtained by sources believed to be reliable but has not been verified. No warranty, guarantee, or representation, whether express or implied, is made with respect to such information. All square footage references are approximate. Terms of lease are subject to change or withdrawal without notice. Lessee is encouraged to verify all information and absorbs all risk due to inaccuracies.

# 8TH AVENUE INDUSTRIAL CENTER



**CONTACT AGENT  
FOR INFORMATION**

## SITE PLAN



**LAUREN QUIRAM**  
**DIRECTOR OF LEASING**  
[lquiram@matrixgroupinc.com](mailto:lquiram@matrixgroupinc.com)  
**303-300-5271**

1805 S. Bellaire St., #400  
Denver, CO 80222  
303-333-7500  
[www.matrixgroupinc.com](http://www.matrixgroupinc.com)



The information contained herein has been obtained by sources believed to be reliable but has not been verified. No warranty, guarantee, or representation, whether express or implied, is made with respect to such information. All square footage references are approximate. Terms of lease are subject to change or withdrawal without notice. Lessee is encouraged to verify all information and absorbs all risk due to inaccuracies.