



For Lease

14550 E. EASTER AVE
CENTENNIAL, CO, 80112



CENTENNIAL INDUSTRIAL PARK - INDUSTRIAL

INDUSTRIAL SPACE

SF AVAIL: 3,300 SF
BLDG SIZE: 35,000 SF
RENOVATED: 2017
ZONING: I
CLEAR HEIGHTS: 14'

UNIT 600: \$12.00/SF NNN

FEATURES:

- DRIVE-IN LOADING
- HIGH-DEMAND SUBMARKET
- CONVENIENT ACCESS TO E. ARAPAHOE RD (HWY88) & S. PARKER RD. (HWY 83)



*Local Ownership &
Property Management*



LAUREN QUIRAM

DIRECTOR OF LEASING

303-300-5271

LQUIRAM@MATRIXGROUPINC.COM

WWW.MATRIXGROUPINC.COM

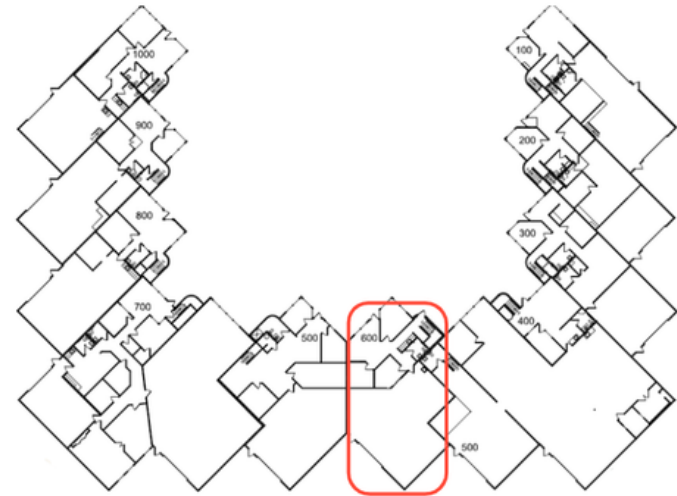
The information contained herein has been obtained by sources believed to be reliable but has not been verified. No warranty, guarantee, or representation, whether express or implied, is made with respect to such information. All square footage references are approximate. Terms of lease are subject to change or withdrawal without notice. Lessee is encouraged to verify all information and absorbs all risk due to inaccuracies.



CENTENNIAL INDUSTRIAL PARK

Available Units

UNIT 600 - 3,300 SF



1805 S. BELLAIRE ST., #400
DENVER, CO 80222 | 303-333-7500

WWW.WWW.MATRIXGROUPINC.COM

The information contained herein has been obtained by sources believed to be reliable but has not been verified. No warranty, guarantee, or representation, whether express or implied, is made with respect to such information. All square footage references are approximate. Terms of lease are subject to change or withdrawal without notice. Lessee is encouraged to verify all information and absorbs all risk due to inaccuracies.