



100 % Leased

1450 WEST EVANS AVENUE,  
DENVER, CO 80223



## 1450 W. EVANS INDUSTRIAL

### INDUSTRIAL/FLEX SPACE

SF AVAIL:

BLDG SIZE: 19,342 SF

RENOVATED: 2021

ZONING: I-2

### FEATURES:

- DRIVE IN & DOCK HIGH DOORS
- STRONG EXPOSURE FROM EVANS AVE.
- CONVENIENT ACCESS TO SANTA FE & EVANS AVE
- EXTERIOR STORAGE AVAIL

▶ *Local Ownership &  
Property Management*



**LAUREN QUIRAM**

DIRECTOR OF LEASING

303-300-5271

LQUIRAM@MATRIXGROUPINC.COM

WWW.MATRIXGROUPINC.COM

NO UNITS AVAILABLE

*The information contained herein has been obtained by sources believed to be reliable but has not been verified. No warranty, guarantee, or representation, whether express or implied, is made with respect to such information. All square footage references are approximate. Terms of lease are subject to change or withdrawal without notice. Lessee is encouraged to verify all information and absorbs all risk due to inaccuracies.*

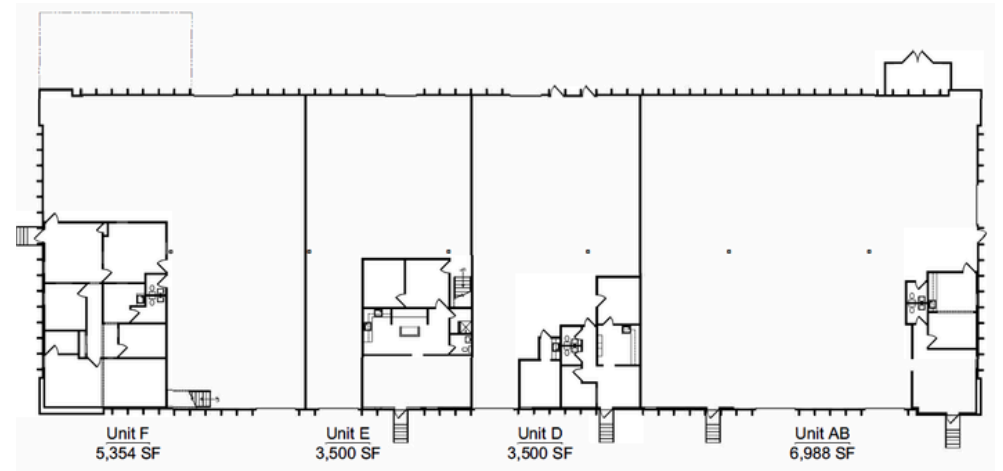


## 1450 W. EVANS INDUSTRIAL



FENCED  
EXTERIOR  
STORAGE  
AVAILABLE!

*No Available Units*



1805 S. BELLAIRE ST., #400  
DENVER, CO 80222 | 303-333-7500

WWW.WWW.MATRIXGROUPINC.COM

The information contained herein has been obtained by sources believed to be reliable but has not been verified. No warranty, guarantee, or representation, whether express or implied, is made with respect to such information. All square footage references are approximate. Terms of lease are subject to change or withdrawal without notice. Lessee is encouraged to verify all information and absorbs all risk due to inaccuracies.