



REUNION VILLAGE SHOPPING CENTER

18220 & 18240 East 104th Avenue
Commerce City, CO 80022

Frontage & access
to East 104th Avenue

Located in
rapidly growing
Reunion
development

Strong mix of **national**
and regional tenants
within center

RETAIL SPACE | 100% LEASED

**CALL AGENT
FOR MORE
INFO**

DEMOGRAPHICS



POPULATION

3 mile | 12,776
5 mile | 32,011



HOUSEHOLD INCOME

3 mile | \$129,395
5 mile | \$111,349



ANN. CONSUMER SPENDING

3 mile | \$145,987
5 mile | \$333,642



TRAFFIC COUNTS

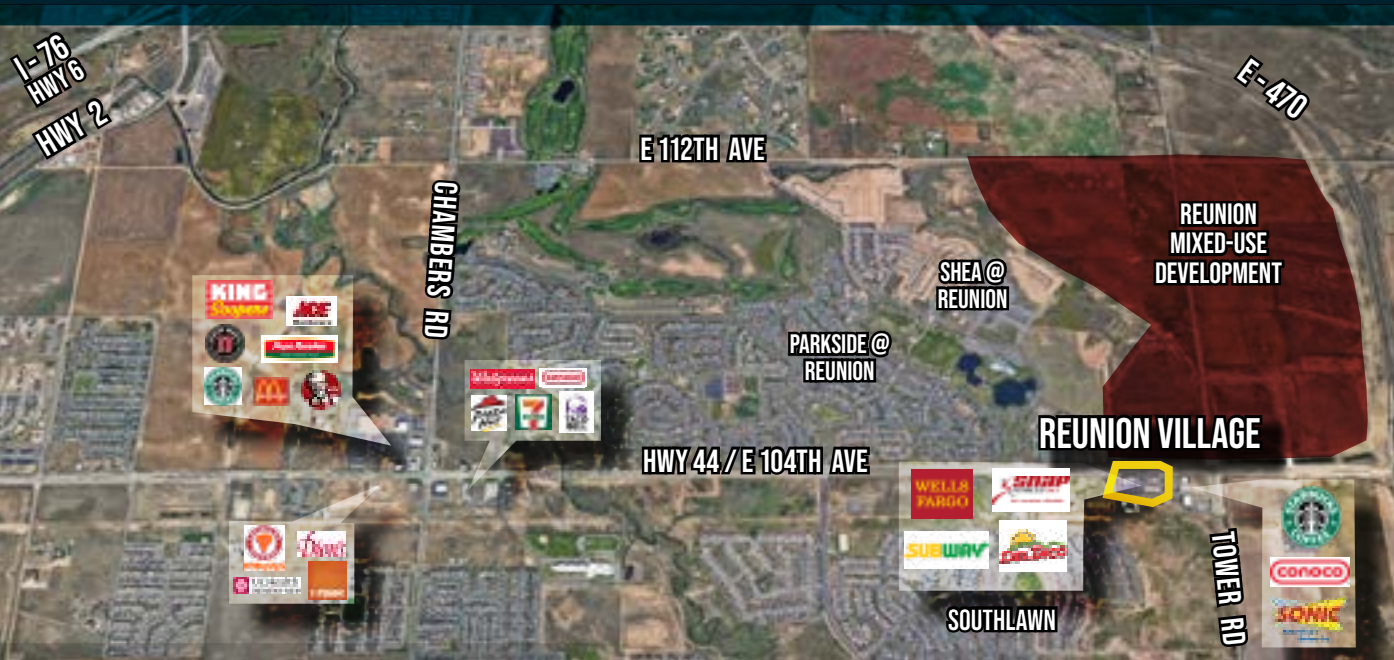
EAST 104TH AVENUE @
TOWER RD (EASTBOUND)
13,116 VPD (2018, MPSI)



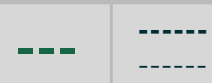
1805 S. Bellaire St., #400
Denver, CO 80222
303-333-7500
www.matrixgroupinc.com

LAUREN QUIRAM
DIRECTOR OF LEASING
lquiram@matrixgroupinc.com
303-300-5271

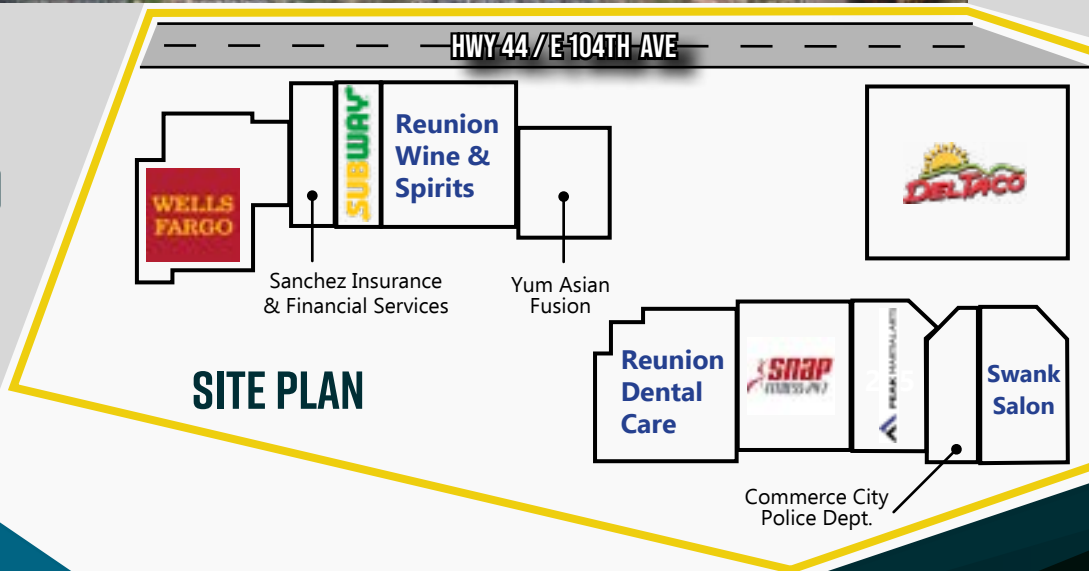
REUNION VILLAGE SHOPPING CENTER



AVAILABLE UNITS



**CALL AGENT
FOR MORE INFO**



LAUREN QUIRAM
DIRECTOR OF LEASING
lquiram@matrixgroupinc.com
303-300-5271

1805 S. Bellaire St., #400
 Denver, CO 80222
 303-333-7500
www.matrixgroupinc.com



The information contained herein has been obtained by sources believed to be reliable but has not been verified. No warranty, guarantee, or representation, whether express or implied, is made with respect to such information. All square footage references are approximate. Terms of lease are subject to change or withdrawal without notice. Lessee is encouraged to verify all information and absorbs all risk due to inaccuracies.